



# *The* Heart *Of the* Matter

**MARCH 2026** Newsletter of Southport United Methodist Church

## March Moments

March always feels like a deep breath month to me. After the long stretch of winter routines, gray skies, and busy schedules, March brings something many of our families desperately need — a break. Spring Break weeks scatter across calendars, school rhythms pause, and there's often a chance (even if only briefly) to reset, rest, and reconnect. Whether you're traveling somewhere warm or simply enjoying a slower pace at home, I pray this month offers moments of renewal for you and your family.

March also carries a special celebration in our household because my wife, Lindsey, comes from a strong Irish heritage. That means St. Patrick's Day isn't just a casual holiday — it's practically a family tradition! While many people associate the day with shamrocks and green clothing (which we fully embrace), the story of Saint Patrick is actually one of faith, perseverance, and mission. Patrick returned to the very people who once enslaved him in order to share the love of Christ. It's a powerful reminder that God often calls us to bring hope exactly where it's needed most.

Speaking of celebration, I want to encourage you to join us for our upcoming First Friday Shamrock Shuffle. These gatherings are such a gift to our community — a chance to laugh, connect, and enjoy fellowship together. Events like this remind us that joy and faith are never meant to be separated. We will also be blessed with Irish music during our March 12 and 15 worship services!

By the time you're reading this, we will already be a little ways into the season of Lent. Rather than just beginning the journey, we are settling into it — which is often when the meaning of Lent starts to deepen. Lent gives us space to reflect, to realign, and to intentionally draw closer to God as we move toward the hope of Easter. Some may be practicing prayer in new ways, others fasting or simplifying, and still others making time for Scripture or acts of generosity. However you are observing the season, remember that Lent is less about what we give up and more about what we make room for. When we create space, God meets us there.

I also invite you to keep Brandon and his family in your prayers as he begins a new chapter serving Maple Hill United Methodist Church starting March 1. Moments like these are reminders that ministry is always bigger than any one congregation, and it is a joy to see leaders grow into new opportunities to serve. We are grateful for the ways Brandon continues to share his gifts among us while also stepping into this new season of leadership.

So as March unfolds — with breaks, celebrations, spiritual reflection, and new beginnings — may we embrace it all with gratitude. Let us rest when we can, celebrate when we're able, pray with intention, and trust that God is at work in every season.

Blessings,

Rev. William G. Nickrand

<b>Palm Sunday</b>	<b>Maundy Thursday</b>	<b>Good Friday</b>	<b>Easter</b>
March 26th & 29th	April 2nd	April 3rd	April 5th
Matthew 21:1-11	John 13:1-17, 31-35	John 18:1-19:42	John 20:1-18
I Am King	I Am the Bread of Life	I Am the Lamb	I Am Risen

<b>I Am: Encountering Jesus</b>	<b>Lent</b>	FEB 22	<b>I Am Your Deliverer</b> Matthew 4:1-11
		FEB 26 & MAR 1	<b>I Am the Promise</b> John 3:1-17
		MAR 5 & 8	<b>I Am Living Water</b> John 4:5-42
		MAR 12 & 15	<b>I Am the Good Shepherd</b> John 9:1-41
		MAR 19 & 22	<b>I Am Resurrection and Life</b> John 11:1-45
	<b>MAUNDY THURSDAY</b>	MAR 26 & 29	<b>I Am King</b> Matthew 21:1-11
	<b>GOOD FRIDAY</b>	APR 2	<b>I Am the Bread of Life</b> John 13:1-17, 31b-35
	<b>EASTER</b>	APR 3	<b>I Am the Bread of Life</b> John 13:1-17, 31b-35
		APR 5	<b>I Am Risen</b> John 20:1-18



This Lent and Easter series invites us to encounter Jesus through the profound "I Am" statements in Scripture. From ashes to resurrection, we will explore how Christ's identity reveals God's presence, power, and promise in our lives. Each week brings a deeper understanding of who Jesus is and how we are invited to follow him faithfully.



Join us for *The Way Cafe* the first Thursday every month for fellowship, refreshments, and message in a cafe setting! Service Begins at 6:30 p.m.  
**Join us for our next gathering on Thursday, March 5**



### Communion Schedule

A quick reminder that our Communion schedule will take place beginning the first Thursday of the month.  
Upcoming Communion: Thursday, March 5.

**40**  
SUMC'S 2026 LENTEN STUDY & DEVOTIONAL

**Our In- Person Lenten Study has Began!**  
Join us for our next meeting:  
Wednesday, March 4 from 6:30 - 7:30.  
The Study will continue through March 25  
in the Gathering Area.

**Exodus 40**  
SUMC LENTEN BIBLE STUDY  
begins Wednesday Feb. 18  
[www.facebook.com/groups/exodus40/](http://www.facebook.com/groups/exodus40/)



**@southportumc**

**Online Lenten Devotional:**  
Join us on Facebook for our Lenten Daily Devotional!



A big **THANK YOU** to everyone who helped make our Annual Pancake Dinner a tremendous success! Thanks to your time, energy, and talents, We were blessed to serve over 300 people from our church and community.

Through your servant hearts and joyful fellowship, Christ's love was shared around every table. Thank you for being the hands and feet of Jesus in our community.



**SOUTHPORT**  
UNITED METHODIST  
CHURCH

**SHAMROCK SHUFFLE**

A lively night filled with dancing,  
crafts, and tasty treats

March **6** at 6:30pm

1947 E. Southport Rd  
Indianapolis, IN 46227

**CROSS**  
**CRONING**

Food, Games, Hands  
on project &  
Devotional

Open to 1<sup>st</sup> – 6<sup>th</sup> grade.  
Parent or Guardian must attend  
with them.  
Childcare provided for younger kids

Next: Sunday, March 8, 2026  
11:45 AM – 1:45 PM  
In the Gathering Place

**HOLY LAND 2027**  
January 19-28

**BOOK NOW**

Register Now and Save up to \$150  
Contact: Rodney Frieden  
rodney.frieden@inumc.org

**EO** EDUCATIONAL OPPORTUNITIES TOURS

Some HIGHLIGHTS:  
Sea of Galilee, Nazareth, Bethlehem, Jericho,  
Garden of Gethesame, Mount Zion, Capernaum,  
Jordan River, Via Dolorosa

includes\*: Airfare, Hotel,  
transfers, 15 meals,  
entry fees, taxes  
\*see brochure for details

Please reach out to Kelley Lego for more  
information: [kelley@sumc.org](mailto:kelley@sumc.org)

### Welcome Our New Administrative Assistant

We are pleased to announce that **Kayla Nuckles** will be joining Southport United Methodist Church as our new Administrative Assistant, beginning Monday, March 2.

We are confident that Kayla will serve our congregation and staff with excellence. Please join us in welcoming her to our church family and helping her feel at home.



### WOMEN'S NEWS

The **United Women in Faith circle** will be **meeting on March 10th at 1 pm in the Gathering Area**. We will host our annual "CALL TO PRAYER AND SELF DENIAL" program. The focus of this program is to pray and support all the NATIONAL MISSIONS INSTITUTIONS that help support children in need. The government funded programs for children in need are being reduced or eliminated **so they need our help**. **All are welcome to join on this special day**. The program will be held in the sanctuary and then we will return to the Gathering Area to finish our meeting with a project, snacks and fellowship.

### HUNGER, Inc. FOOD PANTRY

The food pantry has been very blessed with food donations, but some of the items needed are:

**MARCH DONATIONS: JELLY JARS, CANNED MIXED FRUIT AND CANNED PEAS.**

**COLLECTION DATES ARE: MARCH 1ST---MARCH 15TH**

**Thank you so much for the 46 pounds of food donated in February. The clients are very happy to have the pancake mixes and syrup.**

### FEED A NEED (FAN)

The FAN team Meets on **March 12th at p.m. in the gathering area** to bag the 50 meals for the downtown unhoused people in need. They were blessed with the Blessing Bags gathered at MLK day. **YOU** are the hands and feet of Jesus here on Earth by providing these items for those to survive the cold weather.

Another blessing is that there is now a team of bag makers sewing the lovely bags that the food is delivered in. So, we ask for your help at church by donating materials like old sheets, blankets, shirts, leftover materials from other projects and 1/2 inch or 1/4-inch ribbons or other items like strings, shoelaces, etc. **to use as the drawstrings** to close the bags. If you have any of these items, there is a tote in the coat hallway that you can drop your donations into for this month of March. Thank you so much for supporting this ministry

### CREATION CARE

We are lucky to have some recycling sites to help with moving and disposing of items.  
(the following info is a refrigerator paper to hang up and keep all year as a reminder)

#### BEECH GROVE FREE RECYCLING DRIVE

**MARCH 7      JUNE 6      SEPTEMBER 5      NOVEMBER 7      9A-12P      806 MAIN ST. CITY HALL**

**They take the following:**

**paper shredding, metal appliance drop off, hearing aid recycle, unused medicine disposal, and used syringe disposal.**

**ALSO: The back wall of our Gathering Area has collection bins by the Kitchen for:**

**LIONS CLUB –eyeglasses, empty brown medicine containers, egg cartons, grocery bags for the pantry, and pop top tabs for the Ronald McDonald House.**



**You're invited to a  
Life Line Screening  
event!**



**Where:**  
Southport UMC

**When:**  
Wednesday, March 17

### 4 ways to book your appointment...

Scan here:



Call 800-324-9458  
and use promo  
code: HABC001

Visit  
LLSA.SOCIAL/HABC

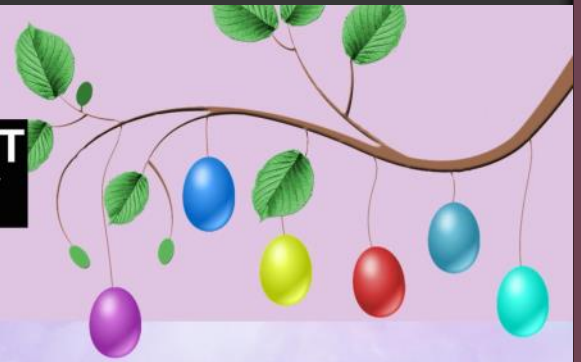
Text the word  
"circle" to  
216-279-1607

These tests cannot detect all risk factors for all conditions, such as and including the presence of coronary artery disease.

Those with abnormal results should discuss possible next steps with their family healthcare provider and ensure they understand the risk and benefits of any additional testing or procedures.



**SOUTHPORT**  
UNITED METHODIST  
CHURCH



## SUMC Easter Festival

March 28, 2-4 p.m.

Join us for our annual Easter Festival happening on Saturday, March 28! We will have easter egg hunts, easter bunny, food, games, and more! All ages welcome! See our Next Steps Table this month for more information on volunteer needs and how you can donate to the event!

### *Easter Transformation*

- I would like to make a donation of \_\_\_\_\_ to Easter Transformation.
- I would like to recognize the following person (people) with a spring flower picture.

In Honor of: \_\_\_\_\_

In Memory of: \_\_\_\_\_

From: \_\_\_\_\_ Phone \_\_\_\_\_

(Please print clearly)



### Operation Transformation

Every year we help with utility bills, make rent payments, provide gas cards, food, and much more. We can do this because of your support through our Pastor Benevolent and Pastor's Ministry Funds. Operation Transformation helps build these funds every year during Advent Season.

Please Purchase a Spring Flower picture in memory or in honor of a loved one, and know that in doing so, you will be showing God's love to someone else with you financial gift. Envelopes are available in the Gathering Place.

# Finance

It is always a bit of a challenge to decide what to write in this space. SUMCs finances are not that of a major corporation but elaborate enough to be difficult to illustrate succinctly in a short article. So, each month I am faced with the quandary of what is most critical to share.

So, this month, I have decided not to worry about that and instead take a step back and remind you of the big picture. Just exactly what you are giving to.

You are giving to Southport United Methodist Church, a faith community that relies on your generosity and involvement to live out our mission and vision of sharing God's love and grace through Jesus Christ in all that we do. We do this to make disciples of Jesus Christ because we believe this will transform not only our community but the world.

We not only want to make new disciples, but we also want to help those who have chosen this path to dive deeper into this journey. We have a process that helps guide the way we live out this journey we have been called to.

This process starts with **connecting**. By this we mean finding ways to connect with Christ and with each other. We live this out through worship, small groups, fellowship, and outreach.

This path continues with **growing**. By this we mean growing in our faith through relationships and connections. We live this out by providing opportunities to study the Bible, both individually and communally and encouraging you to engage in dialogue with others about your faith.

**Serving** is another component we see as critical to this walk. We live this out through numerous ministries and opportunities to serve. We are intentional about making sure we are a blessing by serving each other, our community, and even the world.

**Giving** is a part of this process too. We believe we are just stewards of what we have been given and as such we must be generous as thanks for all that God has provided. We do this by encouraging you to give. We use that giving to support our mission and vision. And we show our thanks to God by financially supporting many non-profit and benevolent organizations as well as tithing to the greater United Methodist Church.

Finally, we are called to **go** and share the hope, grace, and love we have found in Jesus Christ with everyone!

So, thank you, for being a vital part of Southport United Methodist Church. Thank you for living out and sharing the love you have found in Jesus!

Thankful to be a part of SUMC,  
Brandon

Church		Jan-26
<b>Income</b>		
Offerings	\$49,211	
Other	\$0	
Imagination Station "Tithe/offering"	\$6,155	
<b>Church Expenses</b>		
Conf. & Dist. Support	(\$7,351)	
Administration	(\$13,774)	
Maintenance & Utilities	(\$18,403)	
Connect, Grow, Serve	(\$24,831)	
Youth & Child Ministry	(\$2,490)	
<b>Net</b>	<b>(\$11,483)</b>	
<b>Imagination Station</b>		
Income	\$43,964	
Expense	(\$23,896)	
"Tithe/offering" to Church	(\$6,155)	
<b>Net</b>	<b>\$13,913</b>	
<b>All Together</b>		
Total Incomes	\$93,175	
Total Expenses	(\$90,745)	
<b>Net</b>	<b>\$2,430</b>	

## LEADERSHIP TEAM

Connie Klipsch  
Kathy Smith  
William Nickrand  
Rebecca Hamm  
Sherry Davis  
Pat Hulfachor  
Travis Miller  
Margaret Trammell  
Jeff Horne  
Kathy Campbell



1947 E Southport Road  
Indianapolis, IN  
Phone: 317-784-9508  
Email: office@sumc.org  
Website: www.sumc.org

## SERVICE TIMES

Online  
Sunday @ 9:00 a.m.

Sunday

9:00 a.m.-Traditional

10:30 a.m.- Contemporary

Thursday

6:30 p.m.- Casual Service

*Everyone is sharing God's love and grace through Jesus Christ in their everyday, 24 x 7 lives.*

*So that... we are making disciples of Jesus Christ for the transformation of our community and the world.*